

Documentation

‘Smart Touch’ Export Tool:

Documentation

This document is **ONLY** for those Scanners running Smart Touch version **1.9.xx** or higher

January 2023

| | | |
|--------------|---|--------------|
| KODAK Alaris | 'Smart Touch' Export Tool Documentation | January 2023 |
|--------------|---|--------------|

Revision History

| Date | Author | Description |
|---------|--------------|---|
| 7/10/14 | Kelly Cere | First release version for Smart Touch version 1.8.xx. |
| 7/12/15 | Kelly Cere | Added support for i2x20 Series Scanners |
| 8/1/16 | Kelly Cere | Added support for i1190 and i1190E |
| 8/13/18 | Chris Larson | Added support for S2000 and S2000w Series Scanners. This version is still only compatible with Smart Touch version 1.8.xx. |
| 4/29/19 | Chris Larson | Add note about where the Smart Touch settings are stored when the option " All users share the same settings " is chosen. This version is only compatible with Smart Touch version 1.9.xx. |
| 9/15/20 | Chris Larson | Added support for Kodak E1000, S2000, and S2000w Series Scanners. This version has also been tested successfully with Smart Touch for the S3000 and S3000 Max scanners. |
| 1/11/23 | Chris Larson | Added support for Kodak E1030 and E1040 Scanners running with scanner driver version 2.3. This version is only compatible with Smart Touch version 2.0.xx for the E1030 and E1040 Scanners. |

Glossary

| Term | Definition |
|----------------------------------|---|
| Admin | The person responsible for creating and distributing Smart Touch settings for the organization. |
| Client | A Smart Touch user on a PC in the organization. |
| Export Tool (Configuration Tool) | Tool used by the admin to create the settings file. Also called the Configuration Tool. The settings file is then either imported on the client PC or installed as part of a Smart Touch installation. |
| Import | The act of importing a settings file on a PC. This is done by double-clicking on a settings file. When an import is done and Smart Touch is restarted, the new settings take affect based on contents of the settings file. |
| Settings File | The file created by the admin using the Export tool. The .exe version of this file can be imported on the client PC by any user. The .dat version of the settings file can be run by the Smart Touch installer by placing the .dat file in the same folder as the Smart Touch installer, setup.exe. |
| Button Settings | The Smart Touch settings for task shortcuts 1-9 (or 1-20 for the S2000, S2000w, and S3000 scanners). Shortcuts include the task shortcut name, Destination, File type, Folder, and scanning settings profiles. They may also include any custom destinations and user-defined profiles. The settings are all of the values that can be set using the Configure Dialog in Smart Touch. |

Table of Contents

1 OVERVIEW OF THE TOOLS 4

2 INSTALLING THE EXPORT TOOL..... 8

3 EXPORTING SETTINGS 9

4 IMPORTING SETTINGS USING A SELF-RUNNING EXECUTABLE..... 12

5 INSTALLING THE SETTINGS AS PART OF AN INSTALLATION..... 13

6 NOTES..... 13

| | | |
|--------------|--|--------------|
| KODAK Alaris | 'Smart Touch' Export Tool Documentation | January 2023 |
|--------------|--|--------------|

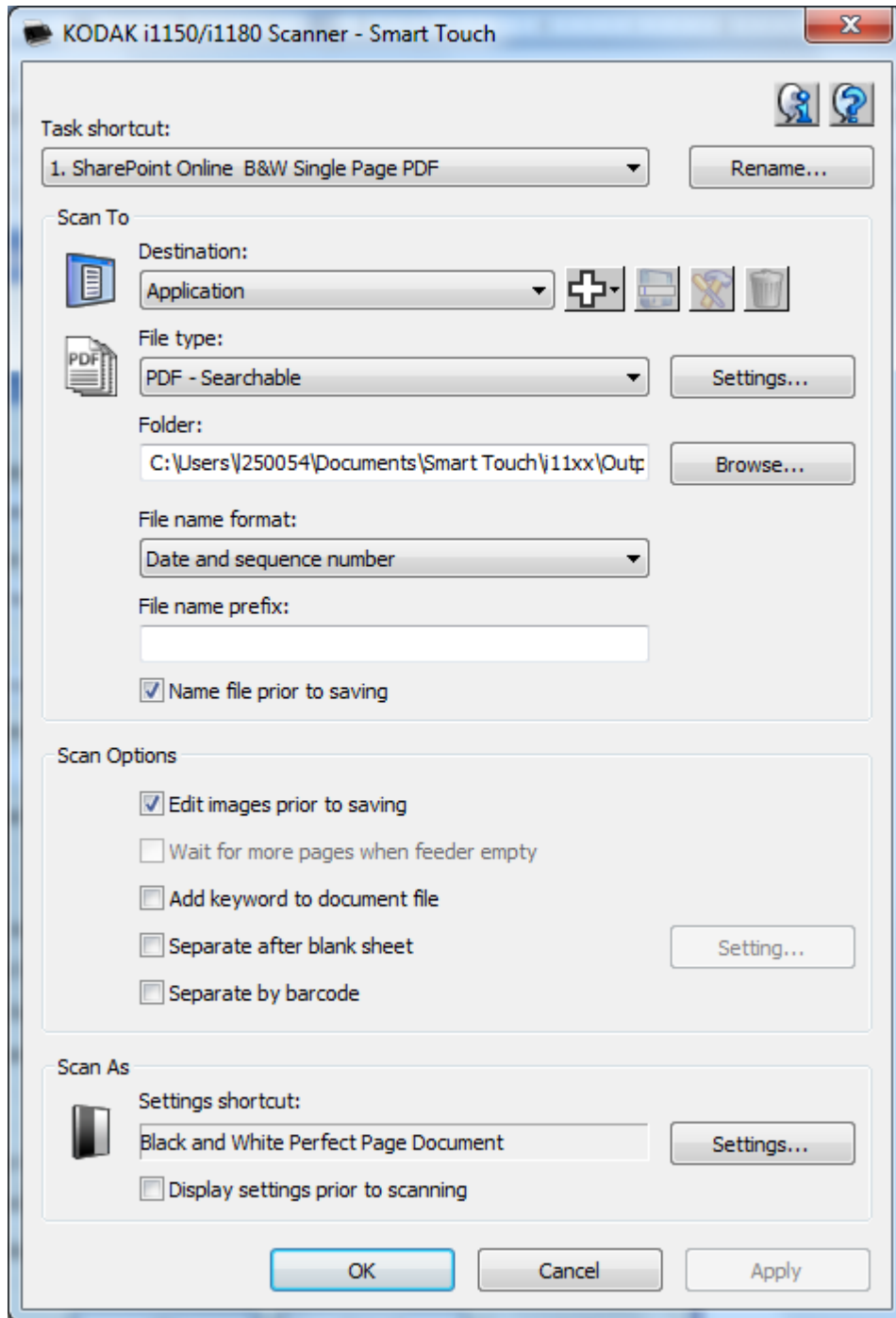
1 Overview of the Tools

The Configuration tools allow an admin to customize Smart Touch and to deploy those customizations to a large number of PCs in an organization. Once imported or installed on the client PC, these custom settings then become the default settings for users on the PCs. There is an Export Tool that captures the button settings on the Admin PC and allows the admin to configure aspects of Smart Touch behavior. The Import Tool provides a mechanism to deploy the settings to client PCs.

Customizations come in one of two flavors:

- Button Settings
- Modification to Smart Touch behavior

For the button settings, this includes all configurable information for buttons 1-9 (a.k.a. task shortcuts 1-9). For the S2000, S2000w, and S3000 scanners, up to 20 buttons can be configured. These values are set by the user using the Smart Touch Configure Dialog.



The button settings include any custom destinations that are defined and any user-defined profiles that exist in the TWAIN driver.

Examples of "modifications to Smart Touch behavior" include the ability to force all users to share the same set of button settings and the ability to prevent users from making further modifications to their button settings. (The default behavior in Smart Touch is that each user has *their own* Smart Touch settings for task shortcuts 1-9 (or 1-20 for the S2000, S2000w, and S3000 scanners) and they *can* make changes to their settings.)

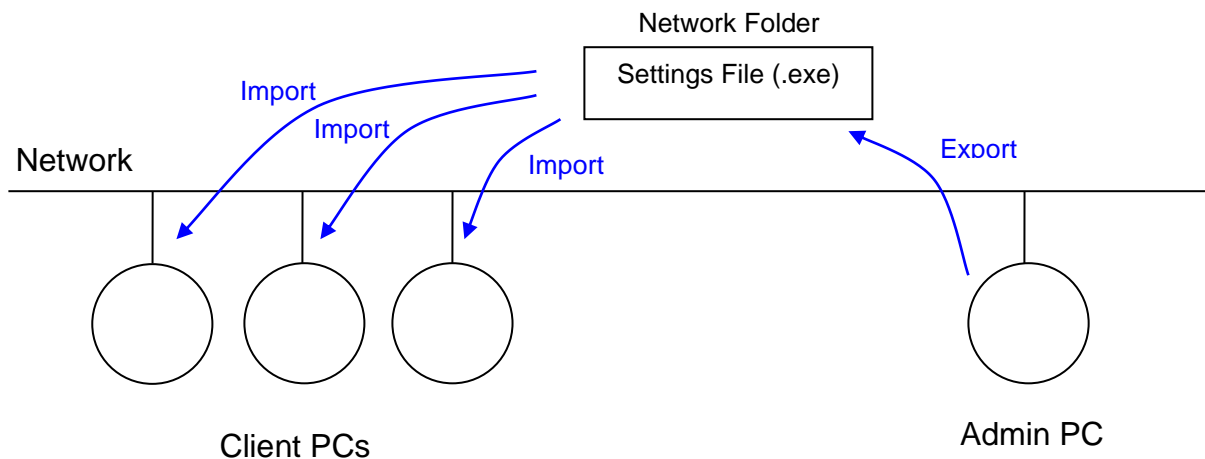
| | | |
|--------------|---|--------------|
| KODAK Alaris | 'Smart Touch' Export Tool Documentation | January 2023 |
|--------------|---|--------------|

General description of how to use the configuration tools:

1. Load the latest version of Smart Touch on the Admin PC.
2. Load the corresponding version of the Export tool on the Admin PC.
3. Admin decides what modifications are desired for the users in the organization.
 - Are the Smart Touch default button settings ok, or are different default settings desired?
 - Should all users on a client PC share the same settings?
 - Should the users on a client PC be allowed to modify the settings?
4. Admin decides how to export the settings to best deploy the changes.
 - Create a self-running .exe file so users can import the settings on their PC?
 - Create a .dat file so it can be added to the Smart Touch installer? This means the changes will be installed as part of the Smart Touch installation on the client PCs.
5. If modifications to the button settings are desired, make the changes to task shortcuts 1-9 (or 1-20 for S2000, S2000w, and S3000 scanners) on the Admin PC and verify the behavior.
6. Admin runs the Export tool, STExportTool.exe.
 - Select which customizations are to be made and select the desired values.
 - Select how the settings are to be exported (self-running .exe or .dat file).
 - Click the Export button.
7. Specify a file name (and location) for the settings file, and click Save. The location could be a local drive, a removable disk drive, or a network folder.

The next steps depend on how the settings are to be deployed.

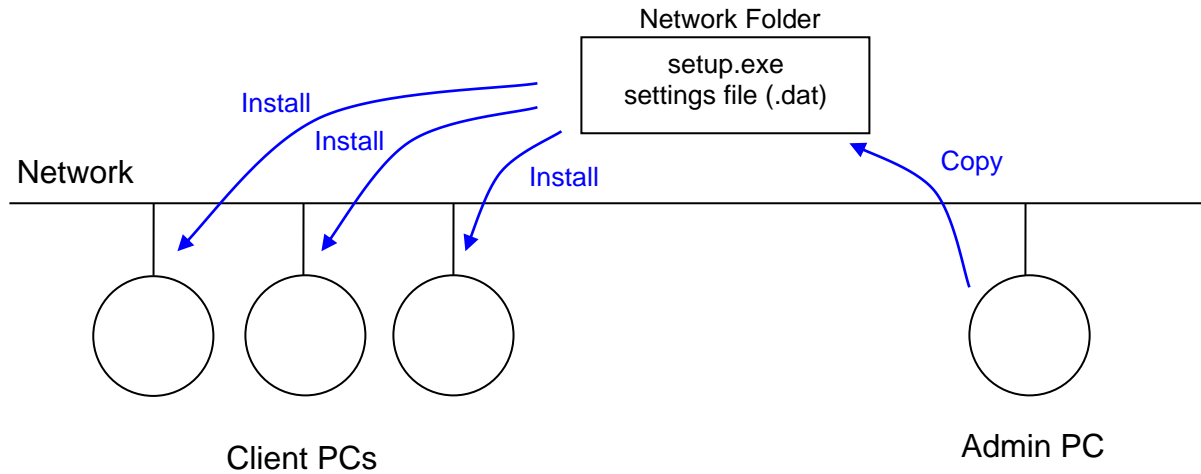
Scenario 1: A self-running settings file (.exe) was created for import on the client PCs.



1. Load the same version of Smart Touch on the client PCs (if it is not already installed).
2. Place the settings file in a location that can be accessed by the clients. This could be a mapped network drive or a removable disk drive that can be taken to each client PC.
3. Each client runs the settings file (by double-clicking on the file) to import the settings to the PC.

| | | |
|--------------|--|--------------|
| KODAK Alaris | 'Smart Touch' Export Tool Documentation | January 2023 |
|--------------|--|--------------|

Scenario 2: A settings file (.dat) was created so the settings can be installed as part of the Smart Touch installation.



1. Place the settings file in the same folder as the Smart Touch installer, setup.exe.
2. Each client runs the installer (by double-clicking on the file) to install Smart Touch and the customized settings to the PC.

Note: The settings file (.dat) could be placed in the “button app” folder on a driver installation CD. In this case the customized settings would be installed silently during the normal driver/Smart Touch installation.

| | | |
|--------------|--|--------------|
| KODAK Alaris | 'Smart Touch' Export Tool Documentation | January 2023 |
|--------------|--|--------------|

2 Installing the Export Tool

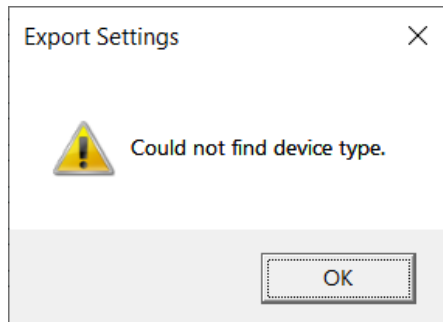
Two components are needed to run the Export Tool.

- **STExportTool.exe** is the tool the admin runs to export the settings to a setting file.
 - **limport.dll** is needed to export settings.
1. Install Smart Touch version 1.9.xx or higher.
 2. Copy the files STExportTool.exe and limport.dll to the Smart Touch installation folder. If Smart Touch was installed in the default folder, the path to that folder (for an E1035 Scanner) is:

C:\Program Files (x86)\Kodak\Document Imaging\kds_e1000\Smart Touch

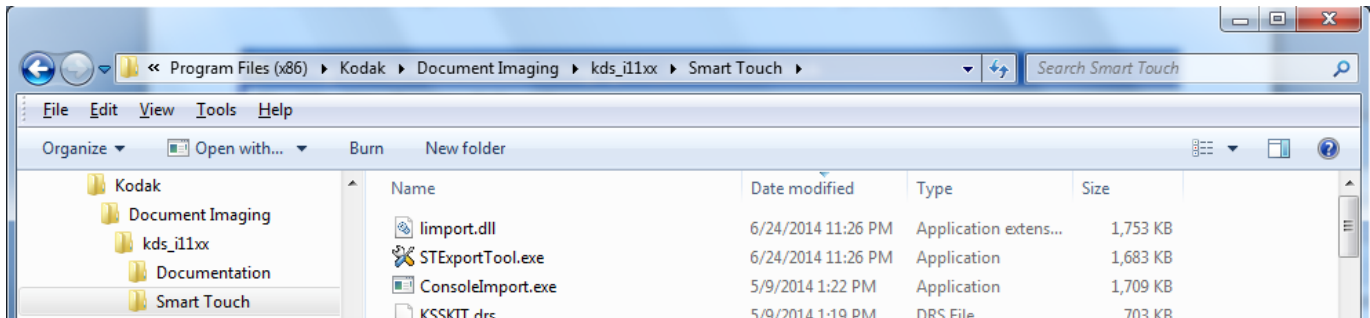
Notes:

- For the Kodak E1025/E1035, Kodak S2000, Kodak S2000w, and Kodak S3000 scanners, Version 1.9.8 or higher of Smart Touch is required. For the Kodak S3000 Max scanners, Version 1.9.9 or higher of Smart Touch is required. Furthermore, the **STExportTool.exe** and **limport.dll** must be the version dated August 31, 2020. The version of the Export Tool is 1.9.8.
- For the Kodak E1030 and E1040 Scanners, Version 2.0.0 or higher of Smart Touch is required. Furthermore the **STExportTool.exe** and **limport.dll** must be the version dated July 4, 2022. The version of the Export Tool is 2.0.0.
- If you don't have the correct version of Smart Touch and the compatible Smart Touch Export tool files installed, you will get the following message when attempting to run the **STExportTool.exe**:

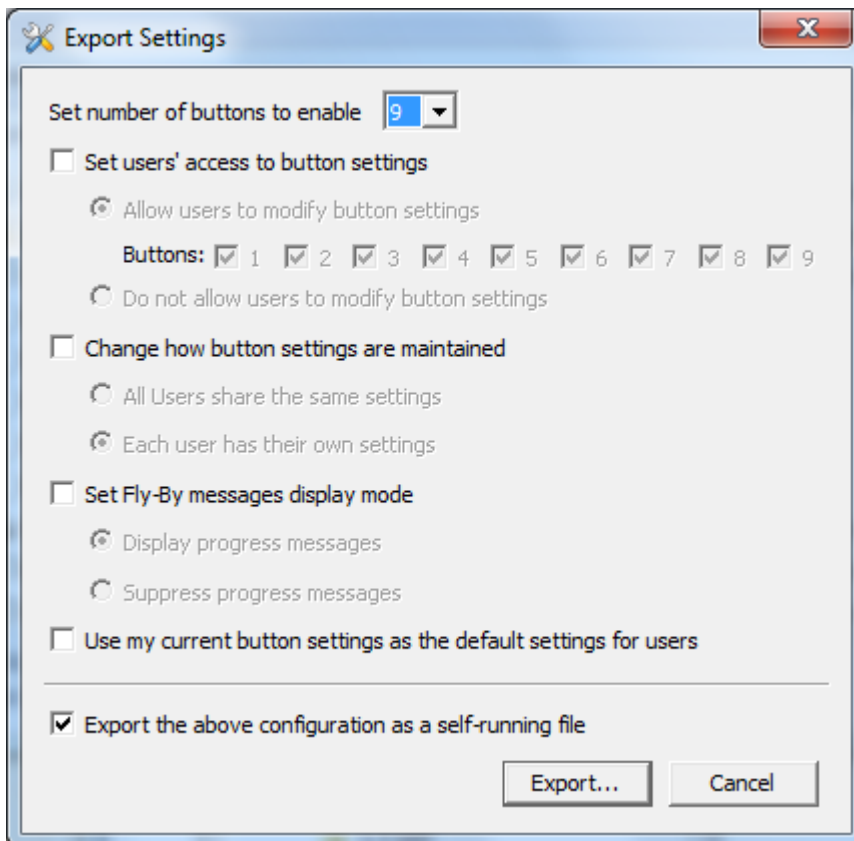


3 Exporting Settings

The admin runs the Export Tool from the Smart Touch installation folder. (Or a desktop shortcut could be created.)



The Export Tool is launched and the following window is displayed. For the S2000, S2000w, and S3000 scanners, up to 20 buttons can be configured with the Export Tool:



Select the checkbox next to an item to export that item. All items that are checked will be included in the exported settings file. Items that are not checked are not included in the settings file. For any checked items, set the radio button or other controls to the desired value.

| | | |
|--------------|---|--------------|
| KODAK Alaris | 'Smart Touch' Export Tool Documentation | January 2023 |
|--------------|---|--------------|

Following are descriptions of the settings available on the Export Tool User Interface that can be used to configure how Smart Touch will function for on the client PCs:

- **Set number of buttons to enable** allows the admin to predetermine how many button settings or task shortcuts will be available to the Smart Touch user. Setting the number to 9 (or 20 for the S2000, 2000w, and S3000 scanners) allows all shortcuts to be accessible. Changing the setting to a number less than 9 (or 20) means that the Smart Touch user will only be able to select some shortcuts.

For example, if the number is set to 5, only shortcuts 1 to 5 will be displayed on the Smart Touch pop-up menu from the system tray and on the Configure screen. If a user scrolls to a higher number using the scanner buttons, Smart Touch will not respond when the scanner start button is pressed for a number higher than the user is allowed.

Note that if the number of buttons is set to a lower number and this value is installed to the Smart Touch user's PC and later set back to a higher number, it may cause any customized button settings for higher number buttons to be lost.

- **Set user's access to button settings** allows the admin to predetermine how many and which button settings/ task shortcuts the Smart Touch user can configure. If the admin wants to allow them to modify only some of the buttons, the radio button should be set to "Allow users to modify buttons settings" and fill in the checkbox for any button settings that the Smart Touch user is allowed to modify. The Smart Touch user will not be able to modify button settings for any buttons that are unchecked.
- **Change how button settings are maintained** allows the admin to setup Smart Touch so that all users who have access to a PC will have the same button setups – or – they can setup Smart Touch so that each user login has their own set of button settings.

Notes:

- After upgrading to a 1.9.x release of SmartTouch, if the SmartTouch Import/Export tool was used to replicate SmartTouch settings across multiple PCs, and the option **All users share the same settings** is chosen, the SmartTouch settings will be moved to the following directory on the PC:

C:\Users\Public\Documents\Smart Touch\<scanner family name>

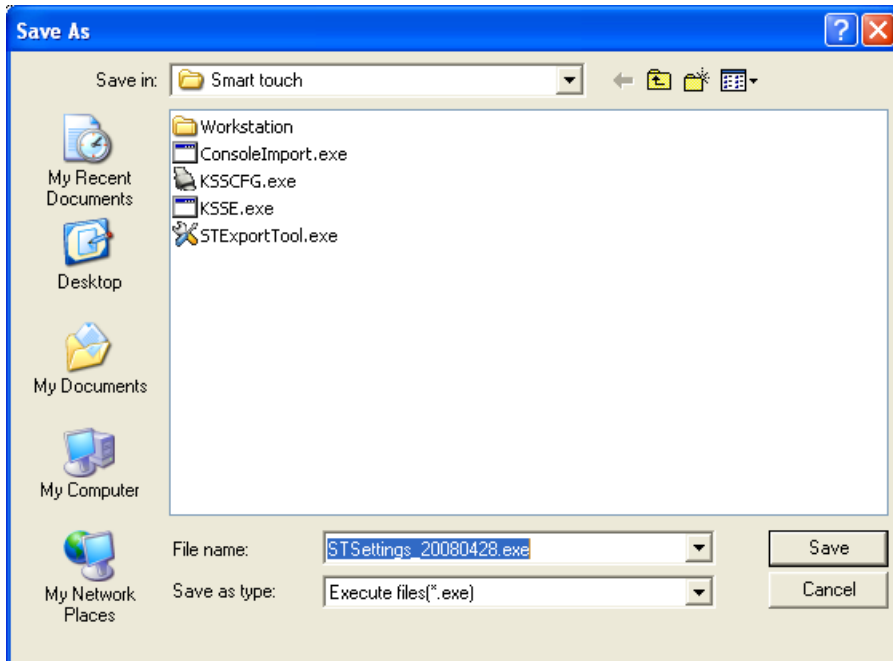
- If **Set user's access to button settings** is set to "Do not allow users to modify button settings", it does not make sense to check **Change how button settings are maintained**. In this case, users will not be able to modify the button settings.
- **Set Fly-By messages display mode** allows the admin to configure Smart Touch to either display or not display status messages that are displayed while scanning. When "Suppress progress messages" is selected, the Scanning – Fly-by preview window and Please Wait processing/saving dialog will not be displayed. Most error messages will still be displayed.

Note that if "Edit images ...", "Name file ...", or "Display settings ..." boxes are checked for a shortcut, the corresponding message prompts will still be displayed.

- **Use my current button settings as the default settings for users** allows the admin to copy the button settings/ task shortcuts that have been configured on the Admin PC to be transferred to other Smart Touch user's PCs.

Keep the **Export the above configuration as a self-running file** entry checked to create a settings file that is a self-running executable file. Uncheck this item to create a ".dat" settings file.

Click Export, and then specify a file name and location for the settings file.

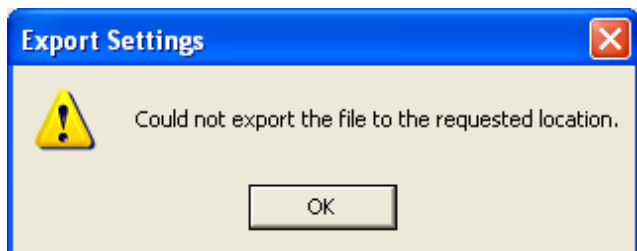


Navigate to a different folder using the “Save in” control; specify a different file name by typing in the “File name” control.

Select “Save” to create the settings file. A message is displayed if the settings were written out successfully.



If the settings could not be written out an error message will be displayed.

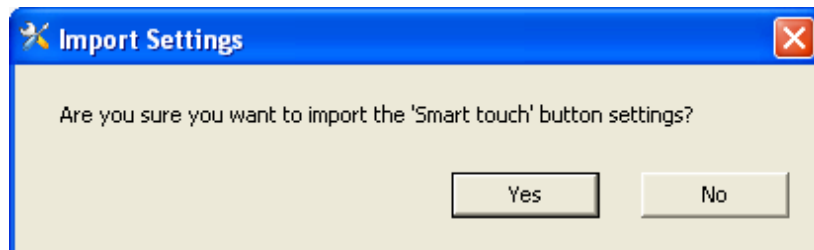


This error likely indicates that the user does not have permission to write to the location, or that the media is write-protected.

4 Importing Settings Using a Self-running Executable

Before importing settings, Smart Touch should not be running on the client PC. A settings file created as an executable file may be imported to a PC by simply double-clicking on the file. In this example, the import settings executable is STSettings_20080428.exe. The settings executable file just needs to be accessible from the PC (e.g. on a local folder, a mapped network drive, or a removable disk drive).

The user must confirm the import.

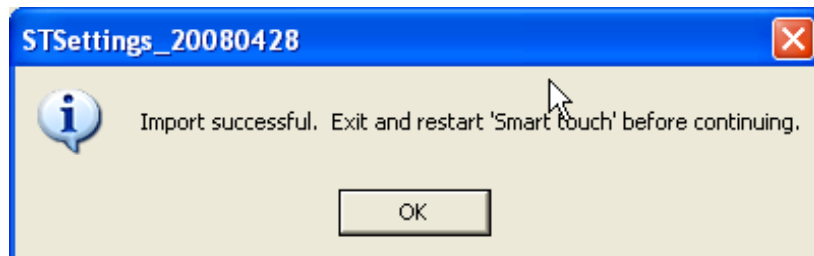


A message is displayed if the settings were imported successfully.



Start Smart Touch and the new settings are in affect.

Note: Smart Touch should not be running when the import is done. If it were left running on the system tray, the following informational message is displayed:



Exit and restart Smart Touch so the settings take effect.

The settings executable file can also be run in silent mode so that the above messages are not displayed. This can be done from a command line interface. The "/s" in the following example indicates that STSettings_20080428.exe should be run in silent mode.



| | | |
|--------------|--|--------------|
| KODAK Alaris | 'Smart Touch' Export Tool Documentation | January 2023 |
|--------------|--|--------------|

The user is responsible for restarting Smart Touch after the settings executable file has been run to install new settings.

5 Installing the Settings as Part of an Installation

The settings (.dat) file should be copied to the same directory as the Smart Touch setup.exe installer. When setup.exe is run, the customized settings are installed as part of the installation. No special messages about the settings are not displayed to the user when using this method.

1. Copy the .dat file to the same location as the Smart Touch Installer
2. Click on the installer executable file
3. The settings will be imported after the install process is completed

6 Notes

1. The admin should take special care when creating the button settings for the users in the organization. Check each of the 9 task shortcuts (or 20 for the S2000, S2000w, and S3000 scanners) on the admin's PC to be sure the values are set to appropriate values. Folder names should be folders common to all users (i.e., it is not likely that you want to use the admin's "MyDocuments/Smart Touch/i11xx/Output folder as the output folder), and any specified printers should be shared printers accessible to all users. Remember that any settings are subject to permission/access rights for different classes of users.
2. When button settings are included in the settings file, the new button settings take affect for all users on the PC when the file is imported.
3. When the **Change how button settings are maintained** mode is set to "All Users sharing the same settings" and any user changes a button setting, it will be changed for all users on the PC. When the mode is set so individual settings are being maintained, when one user changes their button settings it does not affect other users on the PC.
4. One way to use this tool is to create a number of different settings files and save them – and reuse them. For example, if you create a settings file to prevent users from modifying the button settings, it may be a good idea to create one that *allows the buttons to be modified* – and keep it handy. This is a quick way to turn the Configuration menu back on when needed.
5. The 1.9 version of the STExportTool.exe is designed to work with Smart Touch V1.9.xx releases or higher ONLY. The 2.0 version of the STExportTool.exe is designed to work with Smart Touch V2.0.xx releases or higher.